



BELLARINE  
**SPRINGS**



Bellarine Springs Newsletter  
June 2024



Aurora Australis

Lou Maddalon

# A message from our Village Manager

**KENT HODGSON**

It's been a busy month of growth here at Bellarine Springs, stage 10 our final stage is well under way. We have been busy preparing for and assisting some of the final stage 9 residents to move in and call Bellarine Springs home.

We are still waiting for more rain to come and help our developed gardens along.

## Community Centre Updates

The Pavilion and Community Centre have undergone carpet cleaning, resulting in fresh carpets.

Emergency lighting in the community centre has been replaced and upgraded.

Quarterly air conditioning services and monthly fire service checks have also been carried out.

## Village Garden Progress

The gardeners are doing their best to keep on top of the Autumn leave collections, with thanks to some residents that are also collecting them.

## Village Pool

Physiotherapist Keegan is now offering Aquatic exercise classes starting on Wednesday 5th June at 2pm Register your interest at the activity station. More details also available at the activities station.

These classes may help improve balance, mobility and flexibility. Manage chronic conditions. Assist in recovering from any surgeries.

## Best wishes to Sharon Thompson

Our village coordinator, Sharon, who works on Thursdays and Fridays, is leaving our team but will continue on a casual basis. We extend our best wishes to Sharon and express our gratitude for her contributions to the team and residents during her time at Bellarine Springs. We hope you and Jim have a wonderful time on your future travels.

## Emergency Pendant Testing for Homes in Stages 4, 5, and 6

We are delighted to confirm that all emergency pendants are operating correctly. It is crucial to resume regular testing of all emergency pendants. Look out for details in the monthly newsletter and Buzz for your turn to test the emergency button on your pendant.

Please conduct this test between 9:00 am and 1:00 pm, Monday to Friday. It's not beneficial to keep the pendants constantly on the charger handset. Remember to switch the pendants off and on routinely once a month.

## Welcoming New Members to the village Community

We are thrilled to extend a warm welcome to the latest additions to our village community. In June we will have the pleasure of welcoming the following residents to our village:  
Marj and John Cheeseman



# A message from our Sales Manager- Fiona Olin

As you may have seen, Stage 10a is taking shape and I have reservations for 5 of the 9 homes with a further 5 reserved in later sections in Stage 10b/c.

I thank you for warmly welcoming our new community members who have attended our monthly morning teas, so thank you for your introductions and acts of kindness.

We conducted a development information session in May, and that generated a number of reservations and more residents making the great decision to move into our lovely community. This is exciting for the residents to be, and wonderful to see our beautiful expanding community and for the Bellarine Springs team.

As always, I love seeing your cheeky Facebook resident page and all the wonderful events that you have organised, and we have on offer.

The next event coming up that Bellarine Springs is hosting and is close to my heart.

In conjunction with the View Club and The Smith Family BBQ gourmet luncheon on Wednesday 17th July 2024. Money raised assists under privileged students in the Smith Family "learning for life program".

The village currently sponsors 3 children, and we would be eager to continue this.

So please save it in your diary.

I feel lucky seeing resident connections from old friends to new friends in the village. Quite often when on tours the new residents bump into old connections from the local tennis club, bowling club, former workplaces, or footy clubs.....I leave the tours with the biggest smile because I genuinely enjoy seeing these connections form. I would say there are many reasons you all moved into the Village, but the biggest one is all about the "community".

In addition to the new Stage 10 development, we are lucky enough to have two established 2-bedroom homes become available both within a great price range of \$580,000 - \$620,000.

There are also two 3-bedroom homes within the \$800,000 - \$850,000 price range; a Thomson available and ready to go and a Henderson which is currently under offer.

I must also thank the residents that refer interested buyers every month, because I know you speak so highly of the village and genuinely love living here. I think that says it all this month.

Lastly, I want to say the biggest thank you to Sharon Thompson for her support professionally and for her exceptional customer service and smiles every Thursday and Friday. I have had lots of giggles with Shaz and I know she will be missed. Stay warm and those travelling to warmer climates – lucky you!!

Big smiles

Fiona Olin  
Sales Manager  
0455 112 360



John, an incoming resident for stage 10a, is pictured on the left, alongside Jake, the construction bricklayer.

Hello Fellow Residents

# BSRA report



Another busy month, starting off with the Dim Sim Happy Hour, with special guests Darth Vader and R2 D2 showing up to host the Raffle while Steve was on another Galaxy. The whole evening was out of this world.

## VIP Series

This edition of the VIP Series was a talk by Jean Konning on her time on the Gold Coast. One thing she did mention was winning a brand new house in a lottery, just as she was trying to sell her house. The other resident to speak was Rick Goss, who told us about his family's migration to Australia. It was very interesting except they moved Barkers Road Hawthorn consequently, they barracked for Hawthorn.

## Village Outings

About 24 Residents Ventured off in the Village Bus to the Great Ocean Rd Chocolaterie. Everyone had a great time, no doubt plenty of chocolate was eaten. Apparently afterwards a few residents went surfing " HA HA".

## Jills Shoes

Jills Shoes turned up again with another fine array of wonderful shoes.

## Pickled Onion Band

The Pickled Onion Band entertained us with classic songs from the past when we were wild and free. They were so good that we will ask them back in the future. Resident John Barsby was a band member.

Thanks to the BSRA and all other volunteers for putting on these events.

On behalf of all residents I would like to pass on our thoughts and prayers to all those residents who have lost a loved one or who have a partner in Aged Care or Hospital.

Your President  
Steve Merriman



**Bellarine Springs**  
Residents Association

## Website Launch

The BSRA Committee are excited to be able to launch the Residents Association Website.

To access the Website, type the URL below into your browser search on your phone, tablet, laptop or computer.

[www.bsra101.org](http://www.bsra101.org)

**Bellarine Springs**  
Residents Association  
Email: [bsracommittee@gmail.com](mailto:bsracommittee@gmail.com)

Home Activities Helping Each Other Marketplace Documents Your Committee

### WELCOME

Welcome to Version 1 of the BSRA Website.

In this first version you will find information about some of the Activities on offer here in the village. **Helping Each Other** allows residents to offer items for loan or provide a service to other residents. **Marketplace** allows residents to list items they no longer need, either for sale or for free. **Documents** contains copies of recent Village Newsletters, and other BSRA documentation such as our Model Rules and Funding Application forms. **Your Committee** shows the current BSRA Committee together with details of their roles and Minutes of recent BSRA Committee Meeting.

# Community Vegetable Garden Update



## In Loving Memory of resident Maureen Downard.

We are very sad to lose our long term garden coordinator Maureen Downard.

Maureen played a crucial role as the garden coordinator in our developing village, and we are grateful for her dedication in developing our garden.

She was a terrific and dedicated gardener loved planting and nurturing seedlings then sharing the harvest with our village family.

Maureen especially enjoyed chats with residents who dropped by the community garden as they walked (some with dogs) and those going in/out the back gate on their daily walks and shopping.

Her wisdom and kind spirit will always be remembered. Maureen will be greatly missed by her family, and our thoughts and prayers are with them during this challenging period.

To acknowledge Maureen's contribution the Garden Team are planning to plant a miniature bay tree and BSRA has offered to contribute a commemorative plaque.

Rest in peace Maureen

Maria Ryan



# Movies



Hopefully our June movies are a total contrast.

The Electric Horseman stars Robert Redford and Jane Fonda. It is both romantic and thoughtful. Redford is a washed up ex-champion cowboy advertising breakfast food while Fonda is a TV newswoman who will do anything for a good story. When Redford rides a multi-million dollar racehorse out of a Vegas casino and into the desert, Fonda is determined to find out why. A really good watch.

On Thursday 13th @ 2.30pm

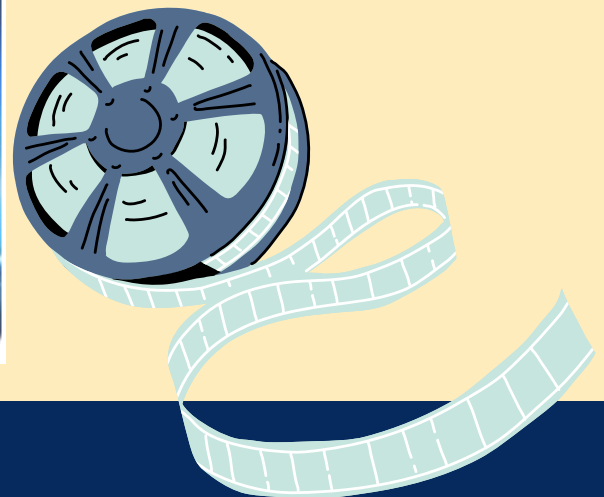
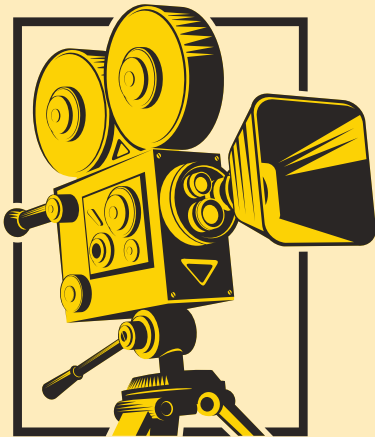
Criminal stars Kevin Costner, Gary Oldman, Tommy Lee Jones and Gal Gadot. After the extreme death of a CIA agent all his information is lost. An experimental medical procedure is used to transfer his memories into the brain of another man. That guinea pig is criminal Jerico already on death row so what happens when you give a dangerous, unpredictable man that much power?

On Thursday 27th @ 7.00pm

As I said, two very different movies for this time around. Enjoy.

Happy Viewing

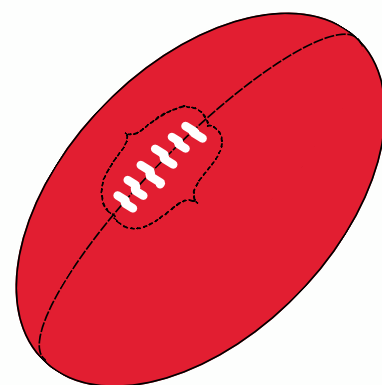
David





### **Birthday morning tea**

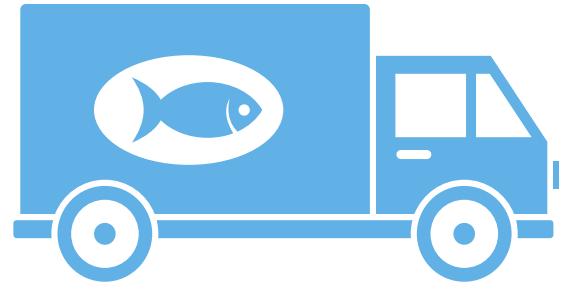
Some very special gentlemen recently celebrated milestone birthdays at our monthly morning tea. Resident Ray Turner turning 80 yrs young and long-time resident Colin McKenzie turned 90 yrs young. The aroma of freshly brewed coffee mingled with the sweet scent of birthday cake, creating a warm and inviting atmosphere for all who attended. Cheers to Ray, Colin, who continue to inspire us with their wisdom, grace, and youthful spirit.



### **Village Football tipping**

Hi fellow footy tipsters !  
It's been an interesting year so far in the footy tipping stakes with a couple of drawn matches and some interesting umpire decisions, some good and some not so good. But then again it depends on which team you barrack for and who would want to be an umpire.  
We are now halfway through the season and it's a pretty tight ship at the top with only a few points between the front runners but anything can change during the last half of the year.

# Jenkins & Son Fresh Fish Friday (1st and 3rd Friday of the month)



7th and 21st June

10.30am - 11am

The Fish Van will be located out  
the front of the community  
centre.

They accept eftpos and cash



# Cheers!



## Social Gathering Report

We had an amazing night at the Potato Shed, where we were taken on a nostalgic journey back to the sixties to witness The Beatles meeting the Everly Bros. We sang along all evening, familiar with every song. Sitting at front tables, bringing snacks to share added to the fun.

Exciting upcoming venues include the Geelong Arts Centre and dining out.

Single individuals, don't hesitate to join us, especially on Tuesday nights during Happy Hour, where we can discuss group activities.

Let's connect and have a great time together!

Rita and Lyn



# VIP SERIES

Very Interesting Presentations

## Assessment for Aged Care Financial Aspects

Bernadette Bartok, General Manager of Homestead Estate, and her colleagues will discuss the Assessment Process for entry into Residential Aged Care and Respite Care and the associated Financial and Funding Implications.

- **Tues June 11th**
- **11:30 - 12:30**
- **In the Theatre**

**SIGN UP NOW  
AT THE  
COMMUNITY  
CENTRE**





## Village Outing

- When** – Wednesday 12<sup>th</sup> and Wednesday 19<sup>th</sup> June  
**Time** – 9:30am at the Community Centre  
**Visit** – Lara Heritage and Historical Museum  
\$5 entry to be paid on the day.  
**Lunch** - Lara Sporting club. Meals \$20 - \$30.  
**Visit** - Roraima Nursery, free entry.  
**Return** - around 3:00pm

**There will be quite a bit of walking to get around the features at the nursery.**

## Our next Village Outing is to the Lara Historical Museum and Roraima Nursery.

### LARA MUSEUM

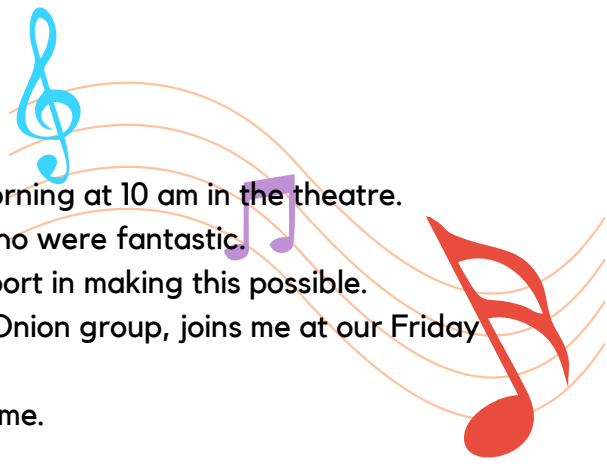
The Lara Museum and Historical Centre occupies the site that was originally established as the Lake Bank Hotel circa 1860. It was constructed for Scottish immigrant James Henderson and operated as a licensed hotel until 1908. The distinctive limestone buildings were home to five generations of Mr Henderson's family until purchased by Mr Bisinella in 2010. Bisinella Developments extensively refurbished the property and now lease it at a peppercorn rent to Lara Heritage and Historical Incorporated whose volunteer members run the Museum.

### RORAIMA GARDENS

More than two acres of stunning display gardens are now open at Roraima Nursery. Combining a unique terrain with innovative landscaping ideas using rocks, industrial artefacts, and recycled materials, the gardens showcase how cacti and succulents can be combined with other plants such as palms and pines to create a beautiful and dramatic garden that is both low in maintenance and requires little water.

Explore the winding pathways, view the amazing garden art, or relax under the shade of peppercorn trees. Around every bend there is something new to discover.

# Musical Moments



You are invited to join our morning melodies group every Friday morning at 10 am in the theatre. Yesterday, we had a great time with the "Pickled Onions" group who were fantastic. I want to express my gratitude to the BSRA for their financial support in making this possible. John Barsby, the resident Bass Guitarist and singer of the Pickled Onion group, joins me at our Friday Morning Melodies sessions. If you are interested in joining our group, you are more than welcome. Our group is made up of cheerful, welcoming individuals.



## Facebook Group



### Bellarine Springs Residents

Private group

We have created a Bellarine Springs Residents Facebook Group to help us communicate quickly with others in the village and to share information.

You just have to ask - we are all here to help each other.

*This will not replace the normal email communications.*

Monday	Tuesday	Wednesday	Thursday
3	4	5	6
<p>8.45am Cycling Group 1 pm Mahjong@ CC 1pm Aqua(resident lead) 1.30pm Rumikub 2pm Scrabble</p>	<p>9am Walking group 10.30am Bonsai Group 11.45am exercises with Penny 1pm Craft 2pm Indoor Bowls 2pm Chicks with Que sticks @ CC 5 pm Sundowners</p>	<p>9.00 am Social Tennis 9.15 am Bus Drysdale 9.30am Tai Chi Classes @ Pavilion 1pm Mahjong @ CC 2pm Physio @ Pool 1.30pm Rummikub 7pm Trivia Night</p>	<p>9.30am Exercises with Penny 11am Aqua (resident lead) 1.30 pm Bridge @ Pavilion 2pm golf croquet@ bowling 2.30pm "Blokes, Belles, Billiards, Beers @ CC</p>
10	11	12	13
<p><b>Public Holiday</b> <b>Office closed</b> 8.45am Cycling Group 1 pm Mahjong @ CC 1pm Aqua (resident lead) 1.30pm Rumikub 2pm Scrabble</p>	<p>9am Walking group 11.45am exercises with Penny 10.30am Bday Morning tea @ CC 11.30am VIP series 1pm Craft @pavilion 2pm Chicks with Que sticks @ CC 2pm Indoor bowls 5pm Sundowners</p>	<p>9.00 am Social Tennis 9.15 am Bus Drysdale 9.30am Village Outing 9.30am Tai Chi Classes @ Pavilion 10am Cafe Zoo 1pm Mahjong @ CC 1.30pm Rummikub 2pm Physio @ Pool</p>	<p>9.30am Exercises with Penny 11am Aqua (resident lead) 1.30 pm Bridge @ Pavilion 2pm golf croquet@ bowling 2.30pm "Blokes, Belles, Billiards, Beers @ CC 2.30pm " @ Theatre room</p>
17	18	19	20
<p>8.45am Cycling Group 1 pm Mahjong@ CC 1pm Aqua (resident lead) 1.30pm Rumikub 2pm Scrabble</p>	<p>9am Walking group 11.45am exercises with Penny 1pm Craft @pavilion 2pm Indoor Bowls 2pm Chicks with Que sticks @ CC</p>	<p>9.15 am Bus Drysdale 9.00am Social Tennis 9.30am Tai Chi Classes @ Pavilion 9.30am Village outing 1pm Mahjong @ CC 1.30pm Rummikub 2pm Physio @ Pool 6.30pm Bingo @ CC</p>	<p>9.30am Exercises with Penny 9.30am Village Outing - Fyansford 11am Aqua (resident lead) 1.30 pm Bridge @ Pavilion 2pm golf croquet@ bowling green 2.30pm "Blokes, Belles, Billiards, beers @ CC 7pm Whisky Night @ CC</p>
24	25	26	27
<p>8.45am Cycling Group 1 pm Mahjong@ CC 1pm Aqua (resident lead) 1.30pm Rumikub 2pm Scrabble</p>	<p>9am Walking group 11.45am exercises with Penny @ pavilion 10am Sue Mystery tour 1pm Craft @pavilion 2pm Indoor Bowls 2pm Chicks Que Sticks 5 pm Sundowners</p>	<p>9.15 am Bus Drysdale 10am Village bus to Westfield 9.00 am Social Tennis 9.30am Tai Chi Classes 1pm Mahjong @ CC 1.30pm Rummikub 2pm Physio @ Pool</p>	<p>9.30am Exercises with Penny 11am Aqua (resident lead) 1.30 pm Bridge @ Pavilion 2pm golf croquet@ bowling green 2.30pm "Blokes, Belles, Billiards, Beers @ CC 7pm "Generals Daughter" @ Theatre</p>

Friday	Saturday	Sunday	Notes
	1	2	<b>June 2024</b>
<p style="text-align: right;">7</p> 10am Musical Moments @ Theatre 10am Village Bus Westfield 10.30am Fresh Fish Van 1pm Mahjong @ CC 2pm Rummikub 5pm Happy Hour @ CC	8	9	
<p style="text-align: right;">14</p> 10am Musical Moments @ Theatre 1pm Mahjong @ CC 2pm Rummikub 5pm Happy Hour @ CC	15	16	
<p style="text-align: right;">21</p> 10am Musical Moments @ Theatre 10.30am Fresh Fish Van 1pm Mahjong @ CC 2pm Rummikub 5pm Happy Hour @ CC Winter Solstice	22	23	
<p style="text-align: right;">28</p> 10am Musical Moments @ Theatre 1pm Mahjong @ CC 2pm Rummikub 5pm Happy Hour @ CC	29	30	

# Winter Solstice @ Happy Hour

Friday June 21st, 2024  
5pm onwards



Spud Van coming on the night.

Rug up and wear your favourite beanie.

Marshmallows by the fire pit.

Bring a Candle in a jar.

